

2010

Metric Conversions

MM x 0.03937 = Inches
Inches x 25.4 = MM
Grams x 0.03527 = Ounces
Ounces x 28.349527 = Grams

EAGLE ROCK[®]
TECHNOLOGIES



**The Largest Selection
of Inch and Metric
Knurls Anywhere.**

Thousands of standard and semi-standard sizes, pitches and patterns for inch and metric knurling tools.

Whether you have a Brown & Sharpe, Armstrong or one of those old abandoned European knurling tools (you know, the one buried in your tool



crib with years of dust on it), **give us a call**. We have knurls **IN STOCK** to fit virtually every tool ever made.

If you do not see exactly what you are looking for, **ASK FOR IT**. Please have the knurl Dimensions, Pitch and Profile needed. If possible, please have the knurling tool manufacturers name and model number also.

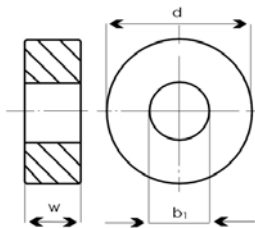
Custom Knurls - Since there is a huge variety of standard knurls available off-the-shelf, your special knurl may not be so special (and costly) after all. When designing the exact knurl for your application, check to see if one of our standard knurls come close enough. This will naturally save all of us a considerable amount of manufacturing time and expense.

If you do not find a standard knurl that comes close enough to what you need, just send us your blueprint. Whether you need something as simple as **TiN coating** of a standard knurl or something totally unique, please give us a call. We would be happy to quote knurls to your exact specifications.

7

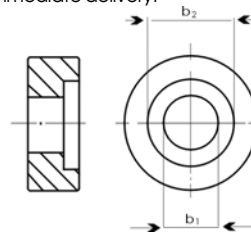
Standard Knurls

A large variety of sizes, pitches and patterns for virtually any holder or application.



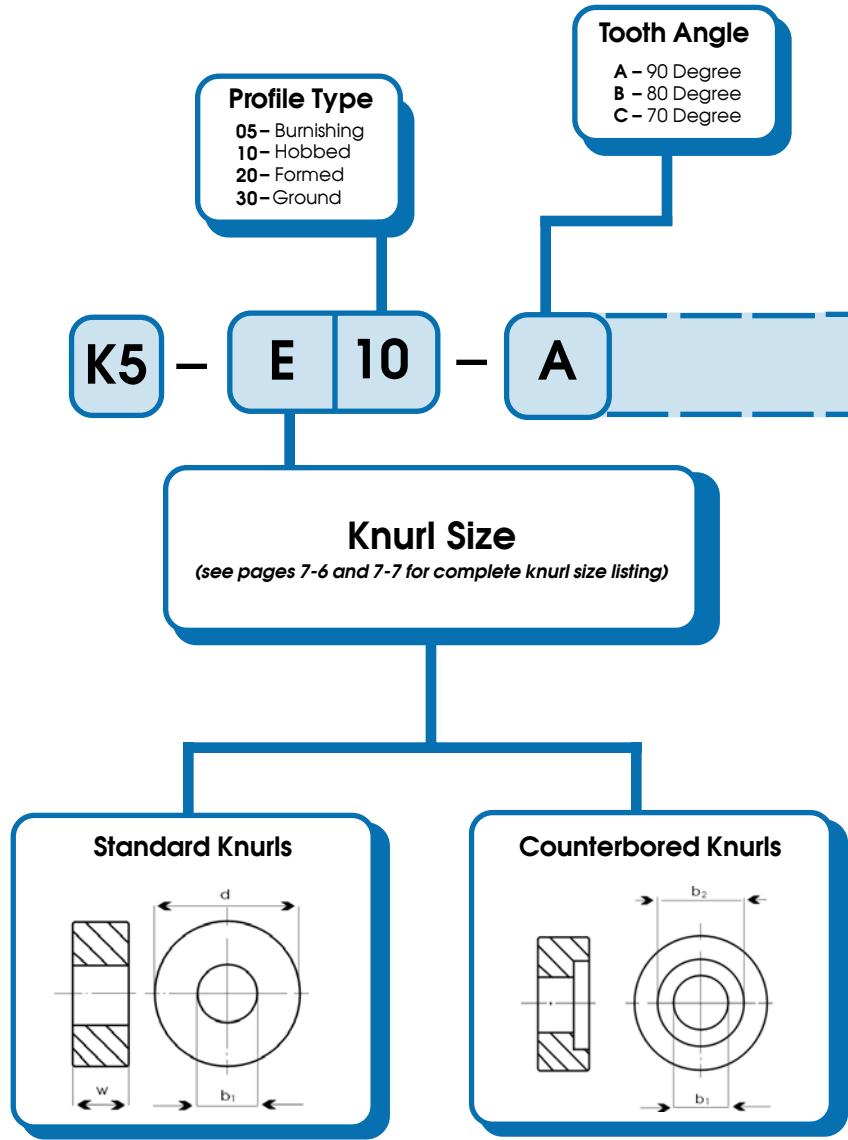
Counterbored Knurls

For knurling up to a shoulder or into blind holes. Available off-the-shelf for immediate delivery.



Identification For Standard Knurls

7



2010

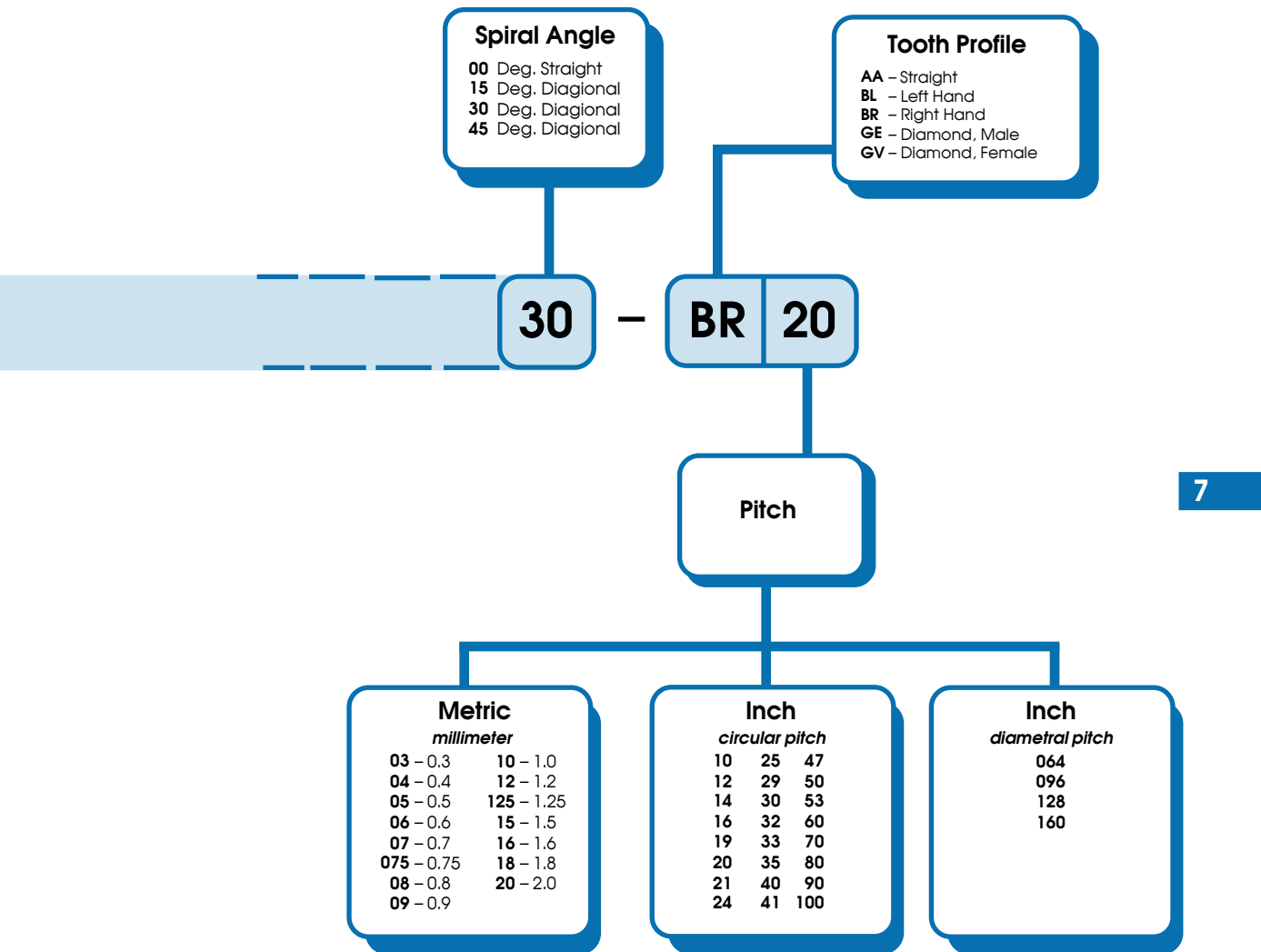
Metric Conversions

MM x 0.03937 = Inches
Inches x 25.4 = MM
Grams x 0.03527 = Ounces
Ounces x 28.349527 = Grams



Knurling – Technical Information

Identification For Standard Knurls (Continued)





Metric Conversions

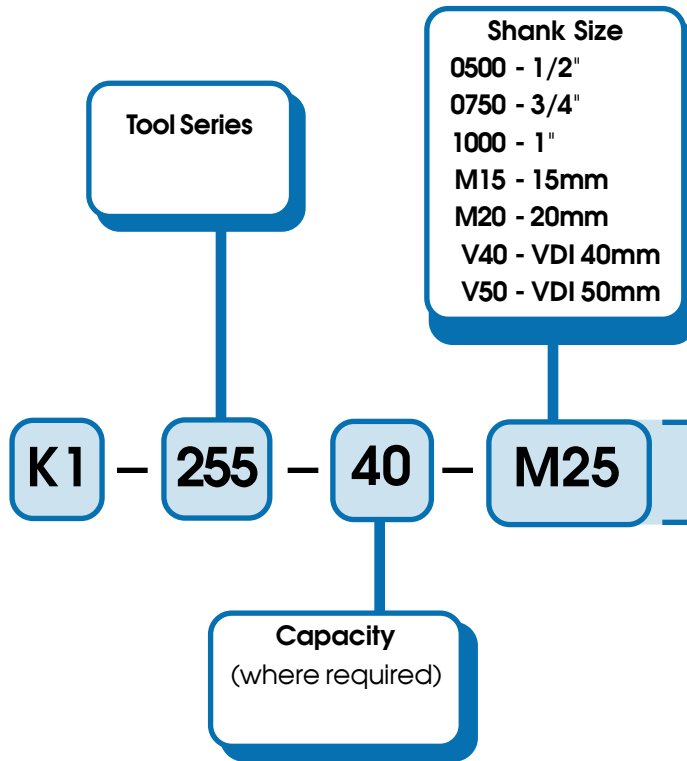
MM	x	0.03937	=	Inches
Inches	x	25.4	=	MM
Grams	x	0.03527	=	Ounces
Ounces	x	28.349527	=	Grams

2010



Knurling – Technical Information

Identification For Standard Knurling Tools



7

2010

Metric Conversions

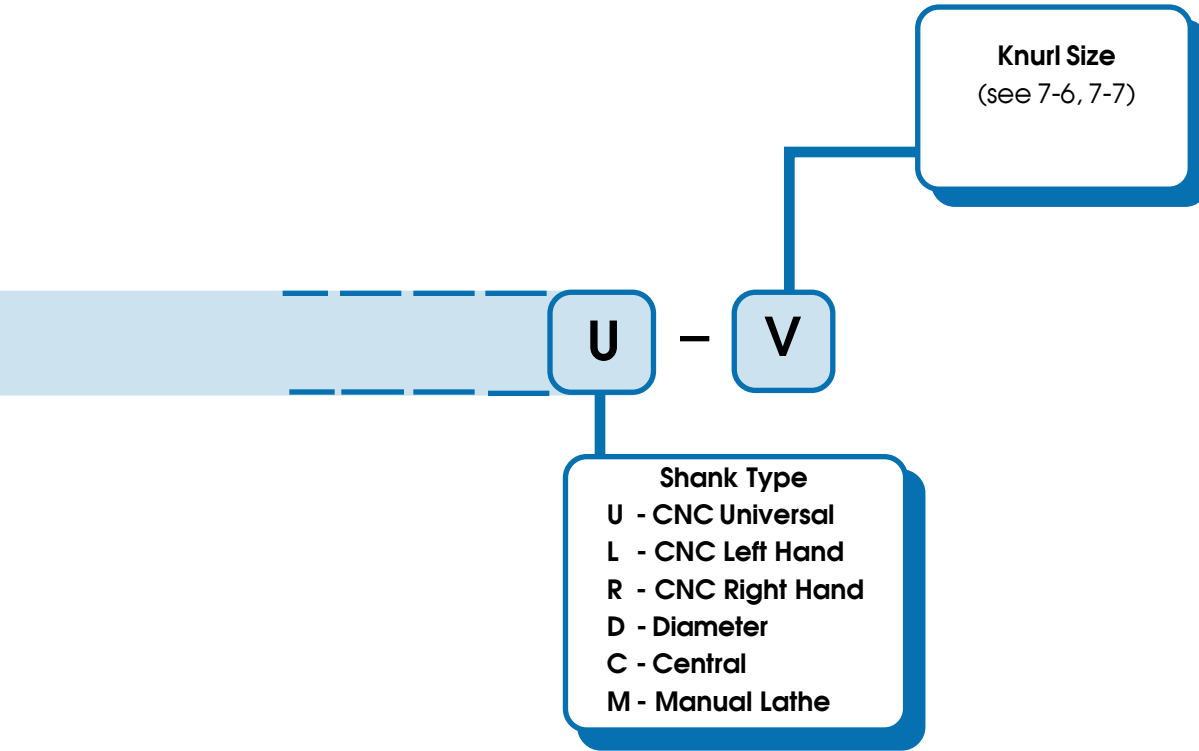
MM x 0.03937 = Inches
Inches x 25.4 = MM
Grams x 0.03527 = Ounces
Ounces x 28.349527 = Grams

EAGLE ROCK®
TECHNOLOGIES



Knurling – Technical Information

Identification For Standard Knurling Tools (Continued)



7



Metric Conversions
 MM x 0.03937 = Inches
 Inches x 25.4 = MM
 Grams x 0.03527 = Ounces
 Ounces x 28.349527 = Grams

2010



Knurling – Technical Information

7

Series	Standard Knurl Sizes						Inch Conversion			Metric Conversion			Counterbore			
	Inch			Metric			Dia.	Width	Bore	Dia.	Width	Bore				
	Dia.	Width	Bore	Dia.	Width	Bore										
AH				5	x 3	x 3	0.197	x	0.118	x	0.118	5	x 3	x 3		
AL				6	x 4	x 4	0.236	x	0.158	x	0.158	6	x 4	x 4		
A	$\frac{5}{16}$	x $\frac{5}{32}$	x $\frac{1}{8}$				0.313	x	0.156	x	0.125	7.94	x	3.97	x 3.18	
AF				8	x 4	x 4	0.315	x	0.158	x	0.158	8	x 4	x 4		
AG				8.9	x 2.5	x 4	0.350	x	0.098	x	0.158	8.9	x	2.5	x 4	
BZ				9.5	x 2.5	x 4	0.374	x	0.098	x	0.158	9.5	x	2.5	x 4	
CA				10	x 2	x 3	0.394	x	0.079	x	0.118	10	x	2	x 3	
BF				10	x 2	x 4	0.394	x	0.079	x	0.158	10	x	2	x 4	
CD				10	x 3	x 3	0.394	x	0.118	x	0.118	10	x	3	x 3	
BG				10	x 3	x 4	0.394	x	0.118	x	0.158	10	x	3	x 4	
AD				10	x 3	x 6	0.394	x	0.118	x	0.236	10	x	3	x 6	
BE				10	x 4	x 3	0.394	x	0.158	x	0.118	10	x	4	x 3	
M				10	x 4	x 4	0.394	x	0.158	x	0.158	10	x	4	x 4	
BH				10	x 5	x 4	0.394	x	0.197	x	0.158	10	x	5	x 4	
AW				10	x 6	x 4	0.394	x	0.236	x	0.158	10	x	6	x 4	
AX				10	x 8	x 4	0.394	x	0.315	x	0.158	10	x	8	x 4	
AE				10	x 10	x 4	0.394	x	0.394	x	0.158	10	x	10	x 4	
CE				11	x 3	x 6	0.433	x	0.118	x	0.236	11	x	3	x 6	
CF				12	x 3	x 4	0.473	x	0.118	x	0.158	12	x	3	x 4	
BJ				12	x 4	x 4	0.473	x	0.158	x	0.158	12	x	4	x 4	
CG				12	x 4	x 5	0.473	x	0.158	x	0.197	12	x	4	x 5	
CH				12	x 5	x 4	0.473	x	0.197	x	0.158	12	x	5	x 4	
BK				12	x 6	x 4	0.473	x	0.236	x	0.158	12	x	6	x 4	
B	$\frac{1}{2}$	x $\frac{3}{16}$	x $\frac{3}{16}$				0.500	x	0.188	x	0.188	12.70	x	4.76	x 4.76	
H	$\frac{1}{2}$	x $\frac{1}{4}$	x $\frac{3}{16}$				0.500	x	0.250	x	0.188	12.70	x	6.35	x 4.76	
CJ	$\frac{1}{2}$	x $\frac{1}{4}$	x $\frac{1}{4}$				0.500	x	0.250	x	0.250	12.70	x	6.35	x 6.35	C
AB				14.5	x 3	x 5	0.571	x	0.118	x	0.197	14.5	x	3	x 5	
BL				15	x 2	x 4	0.591	x	0.079	x	0.158	15	x	2	x 4	
BM				15	x 2.5	x 4	0.591	x	0.098	x	0.158	15	x	2.5	x 4	
BN				15	x 3	x 4	0.591	x	0.118	x	0.158	15	x	3	x 4	
N				15	x 4	x 4	0.591	x	0.158	x	0.158	15	x	4	x 4	
P				15	x 4	x 8	0.591	x	0.158	x	0.315	15	x	4	x 8	
AK				15	x 4	x 9	0.591	x	0.158	x	0.354	15	x	4	x 9	
BP				15	x 5	x 4	0.591	x	0.197	x	0.158	15	x	5	x 4	
CK				15	x 5	x 5	0.591	x	0.197	x	0.197	15	x	5	x 5	
AN				15	x 6	x 4	0.591	x	0.236	x	0.158	15	x	6	x 4	
AT				15	x 6	x 4	0.591	x	0.236	x	0.158	15	x	6	x 4	C
Q				15	x 6	x 4	0.591	x	0.236	x	0.158	15	x	6	x 4	C
CL				15	x 6	x 5	0.591	x	0.236	x	0.197	15	x	6	x 5	
AV				15	x 6	x 6	0.591	x	0.236	x	0.236	15	x	6	x 6	C
AY				15	x 8	x 4	0.591	x	0.315	x	0.158	15	x	8	x 4	
AZ				15	x 10	x 4	0.591	x	0.394	x	0.158	15	x	10	x 4	
BX				15	x 6	x 11	0.591	x	0.236	x	0.433	15	x	6	x 11	C
C	$\frac{5}{8}$	x $\frac{1}{4}$	x $\frac{1}{4}$				0.625	x	0.250	x	0.250	15.88	x	6.35	x 6.35	
AJ	$\frac{5}{8}$	x $\frac{5}{16}$	x $\frac{7}{32}$				0.625	x	0.313	x	0.219	15.88	x	7.94	x 5.56	
CM				16	x 5	x 5	0.630	x	0.197	x	0.197	16	x	5	x 5	
CN				16	x 6	x 5	0.630	x	0.236	x	0.197	16	x	6	x 5	
AP				16	x 7.5	x 6.35	0.630	x	0.295	x	0.250	16	x	7.5	x 6.35	
CP				16	x 8	x 5	0.630	x	0.315	x	0.197	16	x	8	x 5	
AR				19	x 6.25	x 6.35	0.748	x	0.246	x	0.250	19	x	6.25	x 6.35	
CX	$\frac{3}{4}$	x 0.197	x $\frac{1}{4}$				0.750	x	0.197	x	0.250	19.05	x	5.00	x 6.35	

2010

Metric Conversions

MM x 0.03937 = Inches
 Inches x 25.4 = MM
 Grams x 0.03527 = Ounces
 Ounces x 28.349527 = Grams



Knurling – Technical Information

Series	Standard Knurl Sizes						Inch Conversion			Metric Conversion			Counterbore
	Inch			Metric			Dia.	Width	Bore	Dia.	Width	Bore	
	Dia.	Width	Bore	Dia.	Width	Bore							
D	3/4	1/4	1/4				0.750	x 0.250	x 0.250	19.05	x 6.35	x 6.35	C
E	3/4	3/8	1/4				0.750	x 0.375	x 0.250	19.05	x 9.53	x 6.35	
AQ	3/4	3/8	3/8				0.750	x 0.375	x 0.375	19.05	x 9.53	x 9.53	
G	3/4	1/2	1/4				0.750	x 0.500	x 0.250	19.05	x 12.70	x 6.35	
CQ				19.2	x 6.35	x 4.76	0.756	x 0.250	x 0.187	19.2	x 6.35	x 4.76	C
BC				20	x 4	x 6	0.788	x 0.158	x 0.236	20	x 4	x 6	
BQ				20	x 5	x 6	0.788	x 0.197	x 0.236	20	x 5	x 6	
CR				20	x 5	x 8	0.788	x 0.197	x 0.315	20	x 5	x 8	
CS				20	x 5	x 8	0.788	x 0.197	x 0.315	20	x 5	x 8	
CT				20	x 5	x 11	0.788	x 0.197	x 0.433	20	x 5	x 11	
R				20	x 6	x 6	0.788	x 0.236	x 0.236	20	x 6	x 6	
CU				20	x 6	x 6.5	0.788	x 0.236	x 0.256	20	x 6	x 6.5	
CV				20	x 6	x 8	0.788	x 0.236	x 0.315	20	x 6	x 8	
S				20	x 8	x 6	0.788	x 0.315	x 0.236	20	x 8	x 6	
CW				20	x 8	x 6.5	0.788	x 0.315	x 0.256	20	x 8	x 6.5	
BU				20	x 8	x 8	0.788	x 0.315	x 0.315	20	x 8	x 8	
L				20	x 8	x 10	0.788	x 0.315	x 0.394	20	x 8	x 10	
BY				20	x 8	x 13	0.788	x 0.315	x 0.512	20	x 8	x 13	
T				20	x 10	x 6	0.788	x 0.394	x 0.236	20	x 10	x 6	
CZ				20	x 10	x 6.5	0.788	x 0.394	x 0.256	20	x 10	x 6.5	
BR				20	x 12	x 6	0.788	x 0.473	x 0.236	20	x 12	x 6	
DA				20	x 12	x 6.5	0.788	x 0.473	x 0.256	20	x 12	x 6.5	
BD				20	x 15	x 6	0.788	x 0.591	x 0.236	20	x 15	x 6	
BT				20	x 20	x 6	0.788	x 0.788	x 0.236	20	x 20	x 6	
DB				21.5	x 5	x 6	0.847	x 0.197	x 0.236	21.5	x 5	x 6	7
AC				21.5	x 5	x 8	0.847	x 0.197	x 0.315	21.5	x 5	x 8	
F	7/8	3/8	1/4				0.875	x 0.375	x 0.250	22.23	x 9.53	x 6.35	
AU	7/8	3/8	3/8				0.875	x 0.375	x 0.375	22.23	x 9.53	x 9.53	
BA				25	x 4	x 6	0.985	x 0.158	x 0.236	25	x 4	x 6	C
AM				25	x 5	x 11	0.985	x 0.197	x 0.433	25	x 5	x 11	
U				25	x 6	x 6	0.985	x 0.236	x 0.236	25	x 6	x 6	
V				25	x 6	x 8	0.985	x 0.236	x 0.315	25	x 6	x 8	
W				25	x 8	x 6	0.985	x 0.315	x 0.236	25	x 8	x 6	
DE				25	x 8	x 8	0.985	x 0.315	x 0.315	25	x 8	x 8	
X				25	x 10	x 6	0.985	x 0.394	x 0.236	25	x 10	x 6	
DF				25	x 10	x 8	0.985	x 0.394	x 0.315	25	x 10	x 8	
AS				25	x 10	x 16	0.985	x 0.394	x 0.630	25	x 10	x 16	
BV				25	x 12	x 6	0.985	x 0.473	x 0.236	25	x 12	x 6	
DG				25	x 12	x 8	0.985	x 0.473	x 0.315	25	x 12	x 8	
BB				25	x 15	x 6	0.985	x 0.591	x 0.236	25	x 15	x 6	
BW				25	x 20	x 6	0.985	x 0.788	x 0.236	25	x 20	x 6	
CY	1	x 0.236	x 5/16				1.000	x 0.236	x 0.313	25.40	x 6.00	x 7.94	C
K	1	x 3/8	x 5/16				1.000	x 0.375	x 0.313	25.40	x 9.53	x 7.94	
CB	1	x 3/8	x 1/2				1.000	x 0.375	x 0.500	25.40	x 9.53	x 12.70	
DH				25.4	x 5	x 6	1.000	x 0.197	x 0.236	25.4	x 5	x 6	
DJ				30	x 8	x 12	1.181	x 0.315	x 0.473	30	x 8	x 12	
DK				30	x 8	x 12	1.181	x 0.315	x 0.473	30	x 8	x 12	
J	1 1/4	x 1/2	x 1/2				1.250	x 0.500	x 0.500	31.75	x 12.70	x 12.70	
Y				32	x 13	x 16	1.260	x 0.512	x 0.630	32	x 13	x 16	
DL				40	x 8	x 10	1.575	x 0.315	x 0.394	40	x 8	x 10	
Z				42	x 13	x 16	1.654	x 0.512	x 0.630	42	x 13	x 16	

Metric Conversions

MM x 0.03937 = Inches
 Inches x 25.4 = MM
 Grams x 0.03527 = Ounces
 Ounces x 28.349527 = Grams

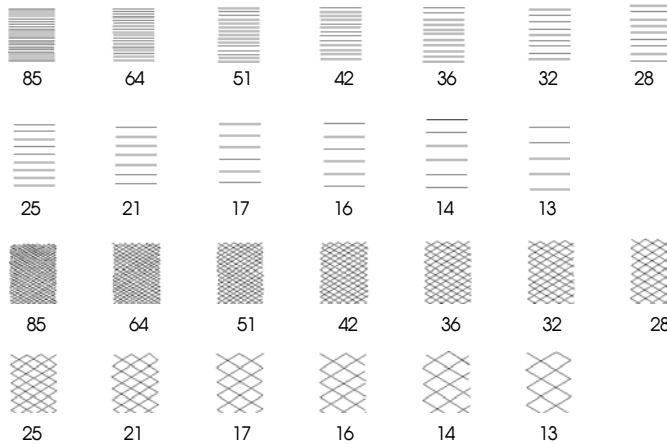
2010



Knurling – Technical Information

Pitches of the teeth of the knurls in TPI:

AA, BL, BR, C, DL, DR, E, FL, FR, GE, GV, KE, KV, KAA, KBL, KBR, KGE



Equivalent Normal TPI of Diametral Pitch Knurls

Diametral Pitch	Equivalent Normal Straight Teeth	Circular TPI 30° Diagonal
64	20.7	23.9
96	30.8	35.6
128	41.1	47.4
160	51.2	59.1

Approximate Increase of Diameters After Knurling

Circular Pitch TPI	Tooth Angle	Diamond			
		Straight	Diagonal	Male	Female
12	90°	.034	.034	.038	.023
16		.025	.025	.029	.017
20		.020	.020	.023	.014
25		.016	.016	.018	.011
30		.013	.013	.015	.009
35		.011	.011	.013	.007
40		.009	.009	.010	.006
35	70°	.014	.014	.016	.009
40		.012	.012	.013	.008
50		.009	.009	.010	.006
60		.007	.007	.008	.005
70		.006	.006	.007	.004
80	.005	.005	.006	.004	
Diametral Pitch					
64	80°	.024	.021	.024	.015
96		.016	.014	.016	.010
128		.012	.010	.010	.007
160		.009	.008	.009	.005

2010

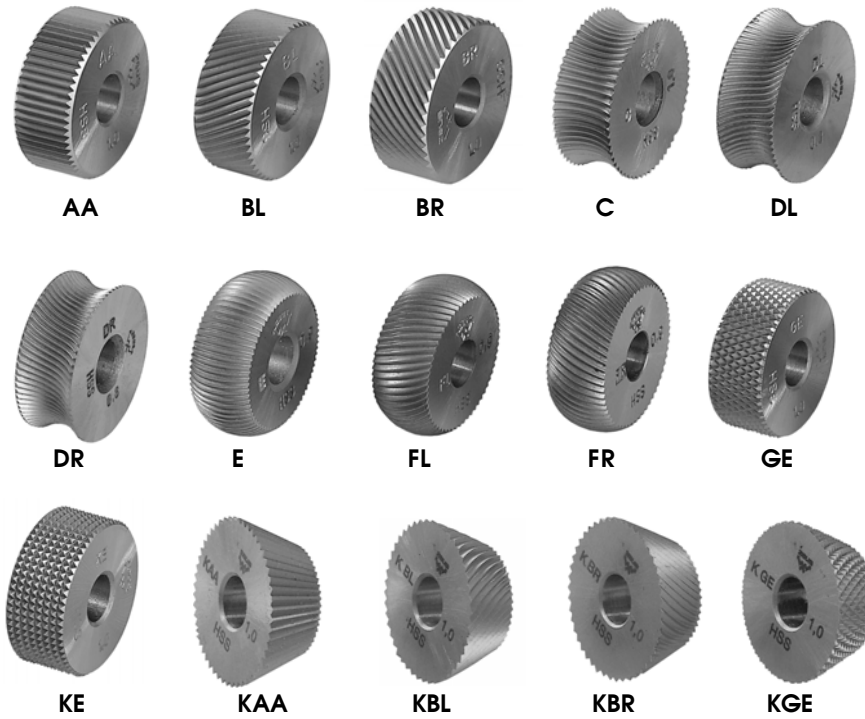
Metric Conversions
MM x 0.03937 = Inches
Inches x 25.4 = MM
Grams x 0.03527 = Ounces
Ounces x 28.349527 = Grams

EAGLE ROCK[®]
TECHNOLOGIES

Knurlcraft[™]

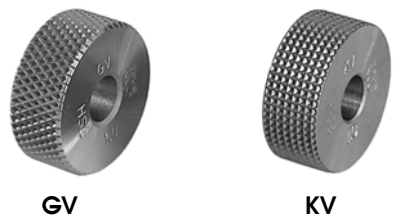
Knurling – Technical Information

No.10 Hobbed profile



7

No. 20 Formed profile



No. 30 Burnishing Profile



2010

Metric Conversions

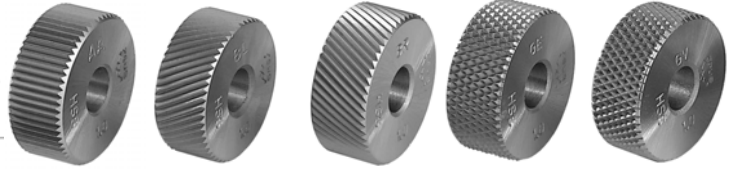
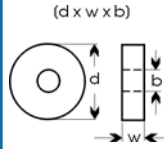
MM x 0.03937 = Inches
 Inches x 25.4 = MM
 Grams x 0.03527 = Ounces
 Ounces x 28.349527 = Grams



Knurls - Inch

A Series — 5/16 x 5/32 x 1/8

5/16



Tooth Angle						
	TPI	AA 0° Straight	BL 30° Left Hand	BR 30° Right Hand	GE 30° Male	GV 30° Female

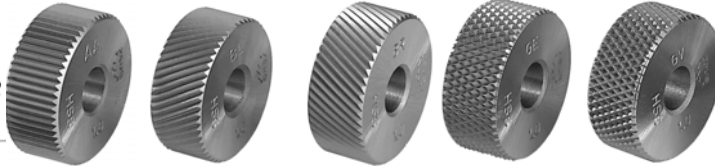
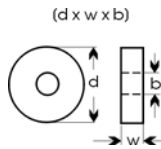
Circular Pitch						
90	16					
90	18					
90	19					
90	20					
90	22					
90	24					
90	25	A10-A00-AA25				
90	29					
90	30	A10-A00-AA30	A10-A30-BL30	A10-A30-BR30	A10-A30-GE30	A20-A30-GV30
90	32					
90	33					
90	35	A10-A00-AA35	A10-A30-BL35	A10-A30-BR35		
90	40	A10-A00-AA40	A10-A30-BL40	A10-A30-BR40		
90	41					
90	47					
70	35					
70	40					
70	50	A10-C00-AA50	A10-C30-BL50	A10-C30-BR50	A10-C30-GE50	A20-C30-GV50
70	53					
70	60	A10-C00-AA60				
70	70	A10-C00-AA70				
70	80	A10-C00-AA80	A10-C30-BL80	A10-C30-BR80	A10-C30-GE80	A20-C30-GV80
70	90	A10-C00-AA90				
70	100	A10-C00-AA100				
Diametral Pitch						
80	064					
80	096	A10-B00-AA096	A10-B30-BL096	A10-B30-BR096	A10-B30-GE096	A20-B30-GV096
80	128	A10-B00-AA128	A10-B30-BL128	A10-B30-BR128	A10-B30-GE128	A20-B30-GV128
80	160	A10-B00-AA160	A10-B30-BL160	A10-B30-BR160	A10-B30-GE160	A20-B30-GV160

8

Knurlcraft[™]

Knurls - Inch

B Series — 1/2 x 3/16 x 3/16



1/2"

Tooth Angle	TPI	AA 0° Straight	BL 30° Left Hand	BR 30° Right Hand	GE 30° Male	GV 30° Female
		Circular Pitch				
90	16	B10-A00-AA16	B10-A30-BL16	B10-A30-BR16		
90	18					
90	19					
90	20	B10-A00-AA20	B10-A30-BL20	B10-A30-BR20	B10-A30-GE20	B20-A30-GV20
90	21					
90	24	B10-A00-AA24				
90	25	B10-A00-AA25	B10-A30-BL25	B10-A30-BR25	B10-A30-GE25	B20-A30-GV25
90	29					
90	30	B10-A00-AA30	B10-A30-BL30	B10-A30-BR30	B10-A30-GE30	B20-A30-GV30
90	32	B10-A00-AA32				
90	33					
90	35	B10-A00-AA35	B10-A30-BL35	B10-A30-BR35		
90	40	B10-A00-AA40	B10-A30-BL40	B10-A30-BR40	B10-A30-GE40	B20-A30-GV40
90	41	B10-A00-AA41				
90	47	B10-A00-AA47				
70	35	B10-C00-AA35				
70	40	B10-C00-AA40				
70	50	B10-C00-AA50	B10-C30-BL50	B10-C30-BR50	B10-C30-GE50	B20-C30-GV50
70	53	B10-C00-AA53				
70	60	B10-C00-AA60				
70	70	B10-C00-AA70				
70	80	B10-C00-AA80	B10-C30-BL80	B10-C30-BR80		B20-C30-GV80
70	90	B10-C00-AA90				
70	100	B10-C00-AA100				
Diametral Pitch						
80	064	B10-B00-AA064	B10-B30-BL064	B10-B30-BR064	B10-B30-GE064	B20-B30-GV064
80	096	B10-B00-AA096	B10-B30-BL096	B10-B30-BR096	B10-B30-GE096	B20-B30-GV096
80	128	B10-B00-AA128	B10-B30-BL128	B10-B30-BR128	B10-B30-GE128	B20-B30-GV128
80	160	B10-B00-AA160	B10-B30-BL160	B10-B30-BR160	B10-B30-GE160	B20-B30-GV160

2010

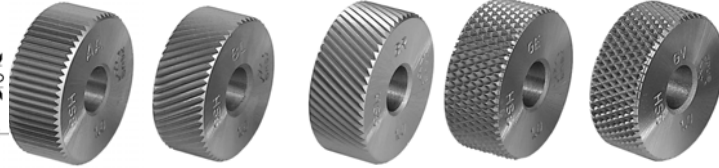
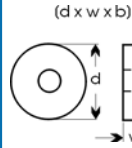
Metric Conversions

MM x 0.03937 = Inches
 Inches x 25.4 = MM
 Grams x 0.03527 = Ounces
 Ounces x 28.349527 = Grams



Knurls - Inch

H Series — 1/2 x 1/4 x 3/16



Tooth Angle	TPI	H Series — 1/2 x 1/4 x 3/16			
		AA 0° Straight	BL 30° Left Hand	BR 30° Right Hand	GV 30° Female
Circular Pitch					
90	12				
90	14	H10-A00-AA14	H10-A30-BL14	H10-A30-BR14	
90	16	H10-A00-AA16	H10-A30-BL16	H10-A30-BR16	
90	18				
90	19				
90	20	H10-A00-AA20	H10-A30-BL20	H10-A30-BR20	
90	21		H10-A30-BL21	H10-A30-BR21	
90	24				
90	25	H10-A00-AA25	H10-A30-BL25	H10-A30-BR25	
90	29				
90	30	H10-A00-AA30	H10-A30-BL30	H10-A30-BR30	
90	32				
90	33	H10-A00-AA33	H10-A30-BL33	H10-A30-BR33	
90	35				
90	40	H10-A00-AA40			
90	41				
90	47				
70	35				
70	40				
70	50				
70	60				
70	70				
70	80				
70	90				
Diametral Pitch					
80	064				
80	096	H10-B00-AA096	H10-B30-BL096	H10-B30-BR096	
80	128	H10-B00-AA128	H10-B30-BL128	H10-B30-BR128	
80	160				

Metric Conversions

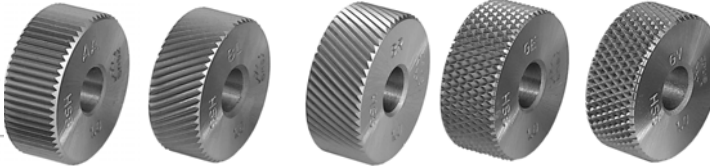
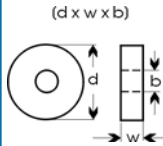
MM	x	0.03937	=	Inches
Inches	x	25.4	=	MM
Grams	x	0.03527	=	Ounces
Ounces	x	28.349527	=	Grams

2010

Knurlcraft[™]

Knurls - Inch

C Series — 5/8 x 1/4 x 1/4



Tooth Angle	TPI	AA 0°	BL 30°	BR 30°	GE 30°	GV 30°
		Straight	Left Hand	Right Hand	Male	Female

Circular Pitch

90	12	C10-A00-AA12	C10-A30-BL12	C10-A30-BR12		
90	14	C10-A00-AA14				
90	16	C10-A00-AA16	C10-A30-BL16	C10-A30-BR16		
90	17	C10-A00-AA17				
90	19	C10-A00-AA19				
90	20	C10-A00-AA20	C10-A30-BL20	C10-A30-BR20	C10-A30-GE20	C20-A30-GV20
90	21	C10-A00-AA21				
90	24	C10-A00-AA24				
90	25	C10-A00-AA25	C10-A30-BL25	C10-A30-BR25	C10-A30-GE25	C20-A30-GV25
90	29	C10-A00-AA29				
90	30	C10-A00-AA30	C10-A30-BL30	C10-A30-BR30	C10-A30-GE30	C20-A30-GV30
90	32	C10-A00-AA32				
90	33	C10-A00-AA33				
90	35	C10-A00-AA35	C10-A30-BL35	C10-A30-BR35		
90	40	C10-A00-AA40	C10-A30-BL40	C10-A30-BR40	C10-A30-GE40	C20-A30-GV40
90	41	C10-A00-AA41				
90	47	C10-A00-AA47				

70	35	C10-C00-AA35				
70	40	C10-C00-AA40				
70	50	C10-C00-AA50	C10-C30-BL50	C10-C30-BR50	C10-C30-GE50	C20-C30-GV50
70	60	C10-C00-AA60				
70	80	C10-C00-AA80	C10-C30-BL80	C10-C30-BR80		
70	90					
70	100					

Diametral Pitch

80	064	C10-B00-AA064	C10-B30-BL064	C10-B30-BR064		C20-B30-GV064
80	096	C10-B00-AA096	C10-B30-BL096	C10-B30-BR096		C20-B30-GV096
80	128	C10-B00-AA128	C10-B30-BL128	C10-B30-BR128		
80	160	C10-B00-AA160	C10-B30-BL160	C10-B30-BR160		

2010

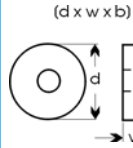
Metric Conversions

MM x 0.03937 = Inches
 Inches x 25.4 = MM
 Grams x 0.03527 = Ounces
 Ounces x 28.349527 = Grams

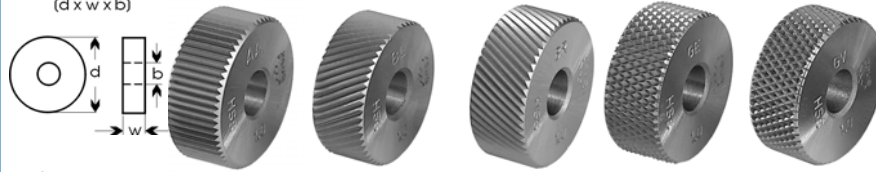


Knurls - Inch

AJ Series — 5/8 x 5/16 x 7/32



5/8"



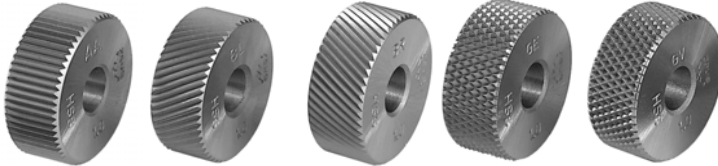
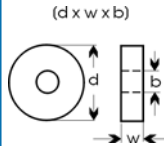
Tooth Angle	TPI	Circular Pitch		
		AA 0° Straight	BL 30° Left Hand	BR 30° Right Hand
90	12			
90	14	AJ10-A00-AA14	AJ10-A30-BL14	AJ10-A30-BR14
90	16			
90	18			
90	19			
90	20			
90	21	AJ10-A00-AA21	AJ10-A30-BL21	AJ10-A30-BR21
90	24			
90	25			
90	29			
90	30			
90	32			
90	33	AJ10-A00-AA33	AJ10-A30-BL33	AJ10-A30-BR33
90	35			
90	40	AJ10-A00-AA40		
90	41			
90	47			
Diametral Pitch				
70	35			
70	40			
70	50			
70	60			
70	70			
70	80			
70	90			
80	064			
80	096			
80	128			
80	160			

8

Knurlcraft[™]

Knurls - Inch

D Series — 3/4 x 1/4 x 1/4



Tooth Angle	TPI	AA 0° Straight	BL 30° Left Hand	BR 30° Right Hand	GE 30° Male	GV 30° Female
-------------	-----	----------------	------------------	-------------------	-------------	---------------

Circular Pitch

90	10	D10-A00-AA10				
90	12	D10-A00-AA12				
90	14	D10-A00-AA14				
90	16	D10-A00-AA16	D10-A30-BL16	D10-A30-BR16	D10-A30-GE16	
90	18					
90	19	D10-A00-AA19				
90	20	D10-A00-AA20	D10-A30-BL20	D10-A30-BR20	D10-A30-GE20	D20-A30-GV20
90	21	D10-A00-AA21				
90	24	D10-A00-AA24				
90	25	D10-A00-AA25	D10-A30-BL25	D10-A30-BR25	D10-A30-GE25	D20-A30-GV25
90	29	D10-A00-AA29				
90	30	D10-A00-AA30	D10-A30-BL30	D10-A30-BR30	D10-A30-GE30	D20-A30-GV30
90	33					
90	35	D10-A00-AA35	D10-A30-BL35	D10-A30-BR35		
90	40	D10-A00-AA40	D10-A30-BL40	D10-A30-BR40		
90	41	D10-A00-AA41				
90	47					
70	35					
70	40					
70	50	D10-C00-AA50	D10-C30-BL50	D10-C30-BR50	D10-C30-GE50	D20-C30-GV50
70	60					
70	80	D10-C00-AA80				
70	90					
70	100					

Diametral Pitch

80	064	D10-B00-AA064	D10-B30-BL064	D10-B30-BR064		D20-B30-GV064
80	096	D10-B00-AA096	D10-B30-BL096	D10-B30-BR096		
80	128	D10-B00-AA128	D10-B30-BL128	D10-B30-BR128		
80	160	D10-B00-AA160	D10-B30-BL160	D10-B30-BR160		

2010

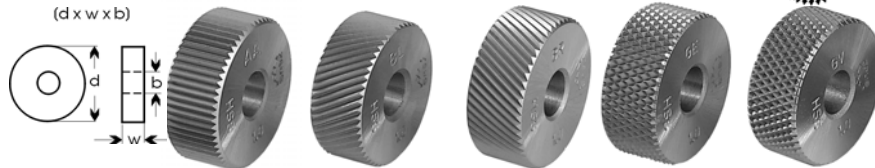
Metric Conversions
 MM x 0.03937 = Inches
 Inches x 25.4 = MM
 Grams x 0.03527 = Ounces
 Ounces x 28.349527 = Grams

EAGLE ROCK®
 TECHNOLOGIES



Knurls - Inch

E Series — 3/4 x 3/8 x 1/4



Tooth Angle	TPI	AA 0° Straight	BL 30° Left Hand	BR 30° Right Hand	GE 30° Male	GV 30° Female
Circular Pitch						
90	8		E10-A30-BL08	E10-A30-BR08		
90	10	E10-A00-AA10	E10-A30-BL10	E10-A30-BR10		
90	12	E10-A00-AA12	E10-A30-BL12	E10-A30-BR12		
90	14	E10-A00-AA14	E10-A30-BL14	E10-A30-BR14	E10-A30-GE14	E20-A30-GV14
90	16	E10-A00-AA16	E10-A30-BL16	E10-A30-BR16	E10-A30-GE16	E20-A30-GV16
90	18	E10-A00-AA18				
90	19					
90	20	E10-A00-AA20	E10-A30-BL20	E10-A30-BR20	E10-A30-GE20	E20-A30-GV20
90	21	E10-A00-AA21	E10-A30-BL21	E10-A30-BR21	E10-A30-GE21	E20-A30-GV21
90	24	E10-A00-AA24				
90	25	E10-A00-AA25	E10-A30-BL25	E10-A30-BR25	E10-A30-GE25	E20-A30-GV25
90	29	E10-A00-AA29				
90	30	E10-A00-AA30	E10-A30-BL30	E10-A30-BR30	E10-A30-GE30	E20-A30-GV30
90	32	E10-A00-AA32				
90	33	E10-A00-AA33	E10-A30-BL33	E10-A30-BR33		
90	35	E10-A00-AA35	E10-A30-BL35	E10-A30-BR35		
90	40	E10-A00-AA40	E10-A30-BL40	E10-A30-BR40		
90	41	E10-A00-AA41				
90	47					
Diametral Pitch						
80	064	E10-B00-AA064	E10-B30-BL064	E10-B30-BR064	E10-B30-GE64	E20-B30-GV064
80	096	E10-B00-AA096	E10-B30-BL096	E10-B30-BR096	E10-B30-GE096	E20-B30-GV096
80	128	E10-B00-AA128	E10-B30-BL128	E10-B30-BR128		E20-B30-GV128
80	160	E10-B00-AA160	E10-B30-BL160	E10-B30-BR160		

8

2010

Metric Conversions

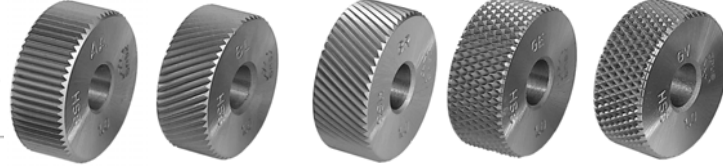
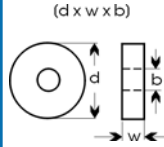
MM x 0.03937 = Inches
 Inches x 25.4 = MM
 Grams x 0.03527 = Ounces
 Ounces x 28.349527 = Grams



Knurls - Inch

G Series — 3/4 x 1/2 x 1/4

3/4"

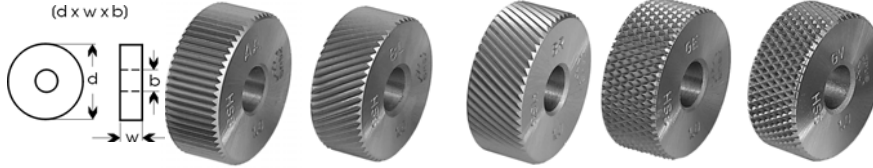


Tooth Angle	TPI	AA 0° Straight	BL 30° Left Hand	BR 30° Right Hand	GE 30° Male	GV 30° Female
		Circular Pitch				
90	12	G10-A00-AA12				
90	14	G10-A00-AA14				
90	16	G10-A00-AA16	G10-A30-BL16	G10-A30-BR16		G20-A30-GV16
90	18					
90	19					
90	20	G10-A00-AA20	G10-A30-BL20	G10-A30-BR20	G10-A30-GE20	G20-A30-GV20
90	21					
90	24					
90	25	G10-A00-AA25	G10-A30-BL25	G10-A30-BR25	G10-A30-GE25	G20-A30-GV25
90	29					
90	30	G10-A00-AA30	G10-A30-BL30	G10-A30-BR30	G10-A30-GE30	G20-A30-GV30
90	32					
90	33					
90	35					
90	40	G10-A00-AA40	G10-A30-BL40	G10-A30-BR40		
90	41					
90	47					
70	35					
70	50					
70	60					
70	70					
70	80					
70	90					
70	100					
Diametral Pitch						
80	064	G10-B00-AA064				
80	096	G10-B00-AA096	G10-B30-BL096	G10-B30-BR096		
80	128	G10-B00-AA128				
80	160					

Knurlcraft[™]

Knurls - Inch

F Series — 7/8" x 3/8" x 1/4"



Tooth Angle	TPI	AA 0° Straight	BL 30° Left Hand	BR 30° Right Hand	GE 30° Male	GV 30° Female
Circular Pitch						
90	12					
90	14					
90	16	F10-A00-AA16	F10-A30-BL16	F10-A30-BR16		
90	18					
90	19					
90	20	F10-A00-AA20	F10-A30-BL20	F10-A30-BR20		
90	21					
90	24					
90	25	F10-A00-AA25	F10-A30-BL25	F10-A30-BR25		
90	29					
90	30	F10-A00-AA30	F10-A30-BL30	F10-A30-BR30		
90	32					
90	33					
90	35					
90	40					
90	41					
90	47					
70	35					
70	50					
70	60					
70	70					
70	80					
70	90					
70	100					
Diametral Pitch						
80	064	F10-B00-AA064				
80	096	F10-B00-AA096	F10-B30-BL096	F10-B30-BR096		
80	128					
80	160					

2010

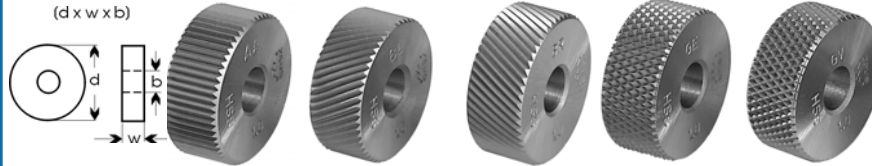
Metric Conversions

MM x 0.03937 = Inches
 Inches x 25.4 = MM
 Grams x 0.03527 = Ounces
 Ounces x 28.349527 = Grams



Knurls - Inch

K Series — 1 x 3/8 x 5/16

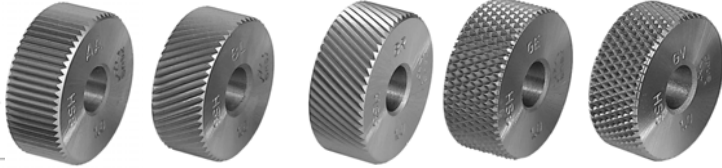
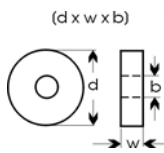


Tooth Angle	TPI	AA 0° Straight	BL 30° Left Hand	BR 30° Right Hand	GE 30° Male	GV 30° Female
		Circular Pitch				
90	12	K10-A00-AA12	K10-A30-BL12	K10-A30-BR12		
90	14	K10-A00-AA14	K10-A30-BL14	K10-A30-BR14		
90	16	K10-A00-AA16	K10-A30-BL16	K10-A30-BR16		
90	18					
90	19					
90	20	K10-A00-AA20	K10-A30-BL20	K10-A30-BR20	K10-A30-GE20	K20-A30-GV20
90	21	K10-A00-AA21	K10-A30-BL21	K10-A30-BR21		
90	24					
90	25	K10-A00-AA25	K10-A30-BL25	K10-A30-BR25	K10-A30-GE25	K20-A30-GV25
90	29					
90	30	K10-A00-AA30	K10-A30-BL30	K10-A30-BR30	K10-A30-GE30	K20-A30-GV30
90	32					
90	33	K10-A00-AA33	K10-A30-BL33	K10-A30-BR33		
90	35					
90	40	K10-A00-AA40				
90	41					
90	47					
70	35					
70	50					
70	60					
70	70					
70	80					
70	90					
70	100					
Diametral Pitch						
80	064	K10-B00-AA064				
80	096	K10-B00-AA096	K10-B30-BL096	K10-B30-BR096	K10-B30-GE096	K20-B30-GV096
80	128					
80	160					

Knurlcraft[™]

Knurls - Inch

J Series — 1 1/4 x 1/2 x 1/2



1 1/4"

Tooth Angle	TPI	AA 0° Straight	BL 30° Left Hand	BR 30° Right Hand	GE 30° Male	GV 30° Female
-------------	-----	----------------	------------------	-------------------	-------------	---------------

Circular Pitch

90	12	J10-A00-AA12				
90	14	J10-A00-AA14	J10-A30-BL14	J10-A30-BR14		
90	16	J10-A00-AA16	J10-A30-BL16	J10-A30-BR16	J10-A30-GE16	J20-A30-GV16
90	18					
90	19					
90	20	J10-A00-AA20	J10-A30-BL20	J10-A30-BR20	J10-A30-GE20	J20-A30-GV20
90	21					
90	24	J10-A00-AA24				
90	25	J10-A00-AA25	J10-A30-BL25	J10-A30-BR25	J10-A30-GE25	J20-A30-GV25
90	29					
90	30	J10-A00-AA30	J10-A30-BL30	J10-A30-BR30	J10-A30-GE30	J20-A30-GV30
90	32					
90	33					
90	35					
90	40	J10-A00-AA40				
90	41					
90	47					

70	35					
70	50					
70	60					
70	70					
70	80					
70	90					
70	100					

Diametral Pitch

80	064					
80	096	J10-B00-AA096	J10-B30-BL096	J10-B30-BR096	J10-B30-GE096	J20-B30-GV096
80	128					
80	160					

2010

Metric Conversions

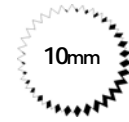
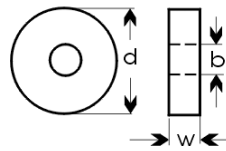
MM x 0.03937 = Inches
 Inches x 25.4 = MM
 Grams x 0.03527 = Ounces
 Ounces x 28.349527 = Grams



Knurls - Metric

AD Series — 10 x 3 x 6

(d x w x b)



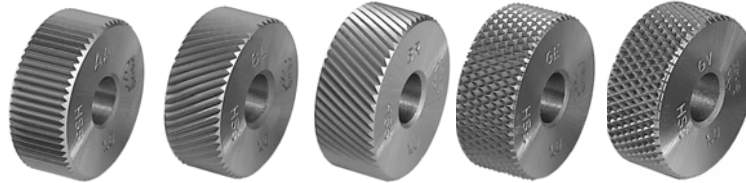
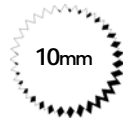
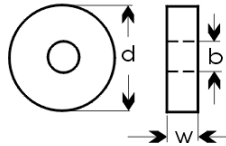
Tooth Angle	Pitch mm [TPI]	AA 0° Straight	BL 15° Left Hand	BL 30° Left Hand	BR 15° Right Hand	BR 30° Right Hand
90°	0.3 [85]	AD10-A00-AA03	AD10-A15-BL03	AD10-A30-BL03	AD10-A15-BR03	AD10-A30-BR03
90°	0.4 [64]	AD10-A00-AA04	AD10-A15-BL04	AD10-A30-BL04	AD10-A15-BR04	AD10-A30-BR04
90°	0.5 [51]	AD10-A00-AA05	AD10-A15-BL05	AD10-A30-BL05	AD10-A15-BR05	AD10-A30-BR05
90°	0.6 [42]	AD10-A00-AA06	AD10-A15-BL06	AD10-A30-BL06	AD10-A15-BR06	AD10-A30-BR06
90°	0.7 [36]	AD10-A00-AA07	AD10-A15-BL07	AD10-A30-BL07	AD10-A15-BR07	AD10-A30-BR07
90°	0.8 [32]	AD10-A00-AA08	AD10-A15-BL08	AD10-A30-BL08	AD10-A15-BR08	AD10-A30-BR08
90°	0.9 [28]	AD10-A00-AA09	AD10-A15-BL09	AD10-A30-BL09	AD10-A15-BR09	AD10-A30-BR09
90°	1.0 [25]	AD10-A00-AA10	AD10-A15-BL10	AD10-A30-BL10	AD10-A15-BR10	AD10-A30-BR10
90°	1.2 [21]	AD10-A00-AA12	AD10-A15-BL12	AD10-A30-BL12	AD10-A15-BR12	AD10-A30-BR12
90°	1.5 [17]	AD10-A00-AA15	AD10-A15-BL15	AD10-A30-BL15	AD10-A15-BR15	AD10-A30-BR15
90°	1.6 [16]					
90°	1.8 [14]					
90°	2.0 [13]					

Knurlcraft[™]

Knurls - Metric

M Series— 10 x 4 x 4

(d x w x b)



Tooth Angle	Pitch mm [TPI]	AA 0° Straight	BL 30° Left Hand	BR 30° Right Hand	GE 30° Male	GV 30° Female
90°	0.3 [85]	M10-A00-AA03	M10-A30-BL03	M10-A30-BR03	M10-A30-GE03	M20-A30-GV03
90°	0.4 [64]	M10-A00-AA04	M10-A30-BL04	M10-A30-BR04	M10-A30-GE04	M20-A30-GV04
90°	0.5 [51]	M10-A00-AA05	M10-A30-BL05	M10-A30-BR05	M10-A30-GE05	M20-A30-GV05
90°	0.6 [42]	M10-A00-AA06	M10-A30-BL06	M10-A30-BR06	M10-A30-GE06	M20-A30-GV06
90°	0.7 [36]	M10-A00-AA07	M10-A30-BL07	M10-A30-BR07	M10-A30-GE07	M20-A30-GV07
90°	0.8 [32]	M10-A00-AA08	M10-A30-BL08	M10-A30-BR08	M10-A30-GE08	M20-A30-GV08
90°	0.9 [28]	M10-A00-AA09	M10-A30-BL09	M10-A30-BR09	M10-A30-GE09	M20-A30-GV09
90°	1.0 [25]	M10-A00-AA10	M10-A30-BL10	M10-A30-BR10	M10-A30-GE10	M20-A30-GV10
90°	1.2 [21]	M10-A00-AA12	M10-A30-BL12	M10-A30-BR12	M10-A30-GE12	M20-A30-GV12
90°	1.5 [17]	M10-A00-AA15	M10-A30-BL15	M10-A30-BR15	M10-A30-GE15	M20-A30-GV15
90°	1.6 [16]					
90°	1.8 [14]					
90°	2.0 [13]					

2010

Metric Conversions
 MM x 0.03937 = Inches
 Inches x 25.4 = MM
 Grams x 0.03527 = Ounces
 Ounces x 28.349527 = Grams

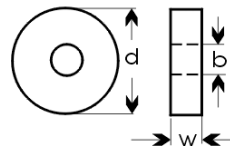
EAGLE ROCK®
 TECHNOLOGIES

Knurlcraft™

Knurls - Metric

AB Series — 14.5 X 3 X 5

(d x w x b)

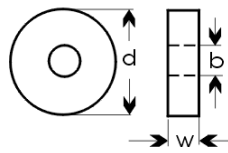


Tooth Angle	Pitch mm [TPI]	AA 0° Straight	BL 15° Left Hand	BL 30° Left Hand	BR 15° Right Hand	BR 30° Right Hand
90°	0.3 [85]	AB10-A00-AA03	AB10-A15-BL03	AB10-A30-BL03	AB10-A15-BR03	AB10-A30-BR03
90°	0.4 [64]	AB10-A00-AA04	AB10-A15-BL04	AB10-A30-BL04	AB10-A15-BR04	AB10-A30-BR04
90°	0.5 [51]	AB10-A00-AA05	AB10-A15-BL05	AB10-A30-BL05	AB10-A15-BR05	AB10-A30-BR05
90°	0.6 [42]	AB10-A00-AA06	AB10-A15-BL06	AB10-A30-BL06	AB10-A15-BR06	AB10-A30-BR06
90°	0.7 [36]	AB10-A00-AA07	AB10-A15-BL07	AB10-A30-BL07	AB10-A15-BR07	AB10-A30-BR07
90°	0.8 [32]	AB10-A00-AA08	AB10-A15-BL08	AB10-A30-BL08	AB10-A15-BR08	AB10-A30-BR08
90°	0.9 [28]	AB10-A00-AA09	AB10-A15-BL09	AB10-A30-BL09	AB10-A15-BR09	AB10-A30-BR09
90°	1.0 [25]	AB10-A00-AA10	AB10-A15-BL10	AB10-A30-BL10	AB10-A15-BR10	AB10-A30-BR10
90°	1.2 [21]	AB10-A00-AA12	AB10-A15-BL12	AB10-A30-BL12	AB10-A15-BR12	AB10-A30-BR12
90°	1.5 [17]	AB10-A00-AA15	AB10-A15-BL15	AB10-A30-BL15	AB10-A15-BR15	AB10-A30-BR15
90°	1.6 [16]					
90°	1.8 [14]					
90°	2.0 [13]					

9

P Series— 15 x 4 x 8

(d x w x b)



Tooth Angle	Pitch mm [TPI]	AA 0° Straight	BL 15° Left Hand	BL 30° Left Hand	BR 15° Right Hand	BR 30° Right Hand
90°	0.3 [85]	P10-A00-AA03	P10-A15-BL03	P10-A30-BL03	P10-A15-BR03	P10-A30-BR03
90°	0.4 [64]	P10-A00-AA04	P10-A15-BL04	P10-A30-BL04	P10-A15-BR04	P10-A30-BR04
90°	0.5 [51]	P10-A00-AA05	P10-A15-BL05	P10-A30-BL05	P10-A15-BR05	P10-A30-BR05
90°	0.6 [42]	P10-A00-AA06	P10-A15-BL06	P10-A30-BL06	P10-A15-BR06	P10-A30-BR06
90°	0.7 [36]	P10-A00-AA07	P10-A15-BL07	P10-A30-BL07	P10-A15-BR07	P10-A30-BR07
90°	0.8 [32]	P10-A00-AA08	P10-A15-BL08	P10-A30-BL08	P10-A15-BR08	P10-A30-BR08
90°	0.9 [28]	P10-A00-AA09	P10-A15-BL09	P10-A30-BL09	P10-A15-BR09	P10-A30-BR09
90°	1.0 [25]	P10-A00-AA10	P10-A15-BL10	P10-A30-BL10	P10-A15-BR10	P10-A30-BR10
90°	1.2 [21]	P10-A00-AA12	P10-A15-BL12	P10-A30-BL12	P10-A15-BR12	P10-A30-BR12
90°	1.5 [17]	P10-A00-AA15	P10-A15-BL15	P10-A30-BL15	P10-A15-BR15	P10-A30-BR15
90°	1.6 [16]	P10-A00-AA16	P10-A15-BL16	P10-A30-BL16	P10-A15-BR16	P10-A30-BR16
90°	1.8 [14]	P10-A00-AA18	P10-A15-BL18	P10-A30-BL18	P10-A15-BR18	P10-A30-BR18
90°	2.0 [13]	P10-A00-AA20	P10-A15-BL20	P10-A30-BL20	P10-A15-BR20	P10-A30-BR20

2010

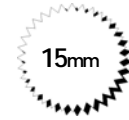
Metric Conversions
 MM x 0.03937 = Inches
 Inches x 25.4 = MM
 Grams x 0.03527 = Ounces
 Ounces x 28.349527 = Grams

EAGLE ROCK®
 TECHNOLOGIES

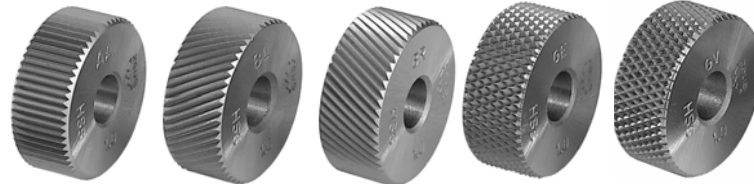
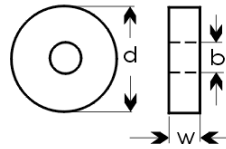


Knurls - Metric

Q Series— 15 x 6 x 4



(d x w x b)



Tooth Angle	Pitch mm [TPI]	AA 0° Straight	BL 30° Left Hand	BR 30° Right Hand	GE 30° Male	GV 30° Female
90°	0.3 [85]	Q10-A00-AA03	Q10-A30-BL03	Q10-A30-BR03	Q10-A30-GE03	Q20-A30-GV03
90°	0.4 [64]	Q10-A00-AA04	Q10-A30-BL04	Q10-A30-BR04	Q10-A30-GE04	Q20-A30-GV04
90°	0.5 [51]	Q10-A00-AA05	Q10-A30-BL05	Q10-A30-BR05	Q10-A30-GE05	Q20-A30-GV05
90°	0.6 [42]	Q10-A00-AA06	Q10-A30-BL06	Q10-A30-BR06	Q10-A30-GE06	Q20-A30-GV06
90°	0.7 [36]	Q10-A00-AA07	Q10-A30-BL07	Q10-A30-BR07	Q10-A30-GE07	Q20-A30-GV07
90°	0.8 [32]	Q10-A00-AA08	Q10-A30-BL08	Q10-A30-BR08	Q10-A30-GE08	Q20-A30-GV08
90°	0.9 [28]	Q10-A00-AA09	Q10-A30-BL09	Q10-A30-BR09	Q10-A30-GE09	Q20-A30-GV09
90°	1.0 [25]	Q10-A00-AA10	Q10-A30-BL10	Q10-A30-BR10	Q10-A30-GE10	Q20-A30-GV10
90°	1.2 [21]	Q10-A00-AA12	Q10-A30-BL12	Q10-A30-BR12	Q10-A30-GE12	Q20-A30-GV12
90°	1.5 [17]	Q10-A00-AA15	Q10-A30-BL15	Q10-A30-BR15	Q10-A30-GE15	Q20-A30-GV15
90°	1.6 [16]	Q10-A00-AA16	Q10-A30-BL16	Q10-A30-BR16	Q10-A30-GE16	Q20-A30-GV16
90°	1.8 [14]	Q10-A00-AA18	Q10-A30-BL18	Q10-A30-BR18	Q10-A30-GE18	Q20-A30-GV18
90°	2.0 [13]	Q10-A00-AA20	Q10-A30-BL20	Q10-A30-BR20	Q10-A30-GE20	Q20-A30-GV20

9

2010

Metric Conversions

MM x 0.03937 = Inches
 Inches x 25.4 = MM
 Grams x 0.03527 = Ounces
 Ounces x 28.349527 = Grams

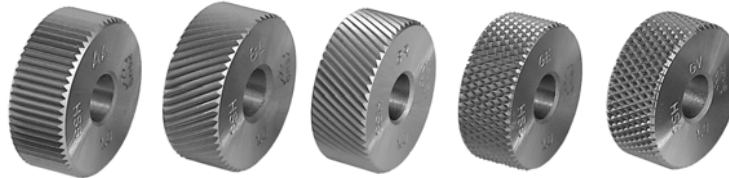
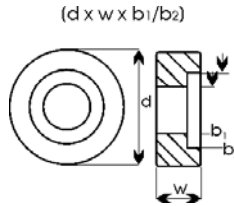
EAGLE ROCK[®]
 TECHNOLOGIES



Knurls - Metric

AV Series — 15 x 6 x 6/8

Counterbored

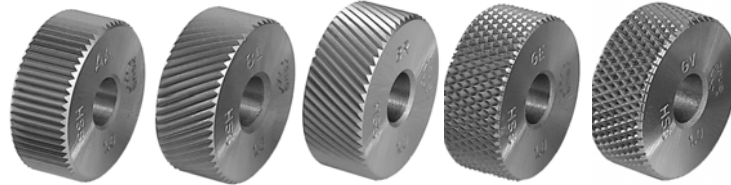
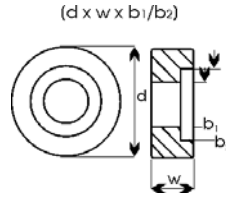


Tooth Angle	Pitch mm [TPI]	AA 0° Straight	BL 30° Left Hand	BR 30° Right Hand	GE 30° Male	GV 30° Female
90°	0.3 [85]					
90°	0.4 [64]					
90°	0.5 [51]					
90°	0.6 [42]	AV10-A00-AA06	AV10-A30-BL06	AV10-A30-BR06	AV10-A30-GE06	AV20-A30-GV06
90°	0.7 [36]	AV10-A00-AA07	AV10-A30-BL07	AV10-A30-BR07	AV10-A30-GE07	AV20-A30-GV07
90°	0.8 [32]	AV10-A00-AA08	AV10-A30-BL08	AV10-A30-BR08	AV10-A30-GE08	AV20-A30-GV08
90°	0.9 [28]	AV10-A00-AA09	AV10-A30-BL09	AV10-A30-BR09	AV10-A30-GE09	AV20-A30-GV09
90°	1.0 [25]	AV10-A00-AA10	AV10-A30-BL10	AV10-A30-BR10	AV10-A30-GE10	AV20-A30-GV10
90°	1.2 [21]	AV10-A00-AA12	AV10-A30-BL12	AV10-A30-BR12	AV10-A30-GE12	AV20-A30-GV12
90°	1.5 [17]	AV10-A00-AA15	AV10-A30-BL15	AV10-A30-BR15	AV10-A30-GE15	AV20-A30-GV15
90°	1.6 [16]					
90°	1.8 [14]					
90°	2.0 [13]					

9

BX Series — 15 x 6 x 6/11

Counterbored



Tooth Angle	Pitch mm [TPI]	AA 0° Straight	BL 30° Left Hand	BR 30° Right Hand	GE 30° Male	GV 30° Female
90°	0.3 [85]	BX10-A00-AA03	BX10-A30-BL03	BX10-A30-BR03	BX10-A30-GE03	BX20-A30-GV03
90°	0.4 [64]	BX10-A00-AA04	BX10-A30-BL04	BX10-A30-BR04	BX10-A30-GE04	BX20-A30-GV04
90°	0.5 [51]	BX10-A00-AA05	BX10-A30-BL05	BX10-A30-BR05	BX10-A30-GE05	BX20-A30-GV05
90°	0.6 [42]	BX10-A00-AA06	BX10-A30-BL06	BX10-A30-BR06	BX10-A30-GE06	BX20-A30-GV06
90°	0.7 [36]	BX10-A00-AA07	BX10-A30-BL07	BX10-A30-BR07	BX10-A30-GE07	BX20-A30-GV07
90°	0.8 [32]	BX10-A00-AA08	BX10-A30-BL08	BX10-A30-BR08	BX10-A30-GE08	BX20-A30-GV08
90°	0.9 [28]	BX10-A00-AA09	BX10-A30-BL09	BX10-A30-BR09	BX10-A30-GE09	BX20-A30-GV09
90°	1.0 [25]	BX10-A00-AA10	BX10-A30-BL10	BX10-A30-BR10	BX10-A30-GE10	BX20-A30-GV10
90°	1.2 [21]	BX10-A00-AA12	BX10-A30-BL12	BX10-A30-BR12	BX10-A30-GE12	BX20-A30-GV12
90°	1.5 [17]	BX10-A00-AA15	BX10-A30-BL15	BX10-A30-BR15	BX10-A30-GE15	BX20-A30-GV15
90°	1.6 [16]					
90°	1.8 [14]					
90°	2.0 [13]					

2010

Metric Conversions

MM x 0.03937 = Inches
 Inches x 25.4 = MM
 Grams x 0.03527 = Ounces
 Ounces x 28.349527 = Grams

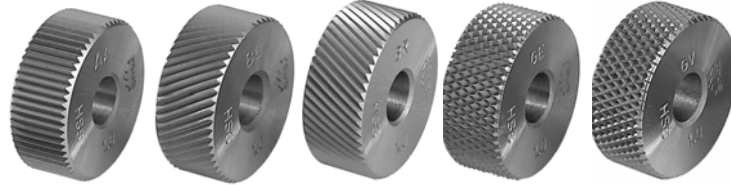
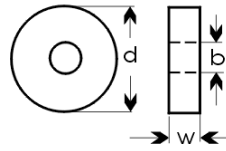
EAGLE ROCK[®]
 TECHNOLOGIES



S Series — 20 x 8 x 6

Knurls - Metric

(d x w x b)



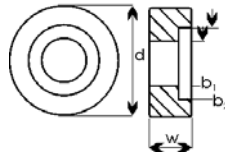
Tooth Angle	Pitch mm [TPI]	AA 0° Straight	BL 30° Left Hand	BR 30° Right Hand	GE 30° Male	GV 30° Female
90°	0.3 [85]	S10-A00-AA03	S10-A30-BL03	S10-A30-BR03	S10-A30-GE03	S20-A30-GV03
90°	0.4 [64]	S10-A00-AA04	S10-A30-BL04	S10-A30-BR04	S10-A30-GE04	S20-A30-GV04
90°	0.5 [51]	S10-A00-AA05	S10-A30-BL05	S10-A30-BR05	S10-A30-GE05	S20-A30-GV05
90°	0.6 [42]	S10-A00-AA06	S10-A30-BL06	S10-A30-BR06	S10-A30-GE06	S20-A30-GV06
90°	0.7 [36]	S10-A00-AA07	S10-A30-BL07	S10-A30-BR07	S10-A30-GE07	S20-A30-GV07
90°	0.8 [32]	S10-A00-AA08	S10-A30-BL08	S10-A30-BR08	S10-A30-GE08	S20-A30-GV08
90°	0.9 [28]	S10-A00-AA09	S10-A30-BL09	S10-A30-BR09	S10-A30-GE09	S20-A30-GV09
90°	1.0 [25]	S10-A00-AA10	S10-A30-BL10	S10-A30-BR10	S10-A30-GE10	S20-A30-GV10
90°	1.2 [21]	S10-A00-AA12	S10-A30-BL12	S10-A30-BR12	S10-A30-GE12	S20-A30-GV12
90°	1.5 [17]	S10-A00-AA15	S10-A30-BL15	S10-A30-BR15	S10-A30-GE15	S20-A30-GV15
90°	1.6 [16]	S10-A00-AA16	S10-A30-BL16	S10-A30-BR16	S10-A30-GE16	S20-A30-GV16
90°	1.8 [14]	S10-A00-AA18	S10-A30-BL18	S10-A30-BR18	S10-A30-GE18	S20-A30-GV18
90°	2.0 [13]	S10-A00-AA20	S10-A30-BL20	S10-A30-BR20	S10-A30-GE20	S20-A30-GV20

BY Series — 20 x 8 x 6/13

Counterbored



(d x w x b₁/b₂)



Tooth Angle	Pitch mm [TPI]	AA 0° Straight	BL 30° Left Hand	BR 30° Right Hand	GE 30° Male	GV 30° Female
90°	0.3 [85]	BY10-A00-AA03	BY10-A30-BL03	BY10-A30-BR03	BY10-A30-GE03	BY20-A30-GV03
90°	0.4 [64]	BY10-A00-AA04	BY10-A30-BL04	BY10-A30-BR04	BY10-A30-GE04	BY20-A30-GV04
90°	0.5 [51]	BY10-A00-AA05	BY10-A30-BL05	BY10-A30-BR05	BY10-A30-GE05	BY20-A30-GV05
90°	0.6 [42]	BY10-A00-AA06	BY10-A30-BL06	BY10-A30-BR06	BY10-A30-GE06	BY20-A30-GV06
90°	0.7 [36]	BY10-A00-AA07	BY10-A30-BL07	BY10-A30-BR07	BY10-A30-GE07	BY20-A30-GV07
90°	0.8 [32]	BY10-A00-AA08	BY10-A30-BL08	BY10-A30-BR08	BY10-A30-GE08	BY20-A30-GV08
90°	0.9 [28]	BY10-A00-AA09	BY10-A30-BL09	BY10-A30-BR09	BY10-A30-GE09	BY20-A30-GV09
90°	1.0 [25]	BY10-A00-AA10	BY10-A30-BL10	BY10-A30-BR10	BY10-A30-GE10	BY20-A30-GV10
90°	1.2 [21]	BY10-A00-AA12	BY10-A30-BL12	BY10-A30-BR12	BY10-A30-GE12	BY20-A30-GV12
90°	1.5 [17]	BY10-A00-AA15	BY10-A30-BL15	BY10-A30-BR15	BY10-A30-GE15	BY20-A30-GV15
90°	1.6 [16]					
90°	1.8 [14]					
90°	2.0 [13]					

2010

Metric Conversions

MM x 0.03937 = Inches
 Inches x 25.4 = MM
 Grams x 0.03527 = Ounces
 Ounces x 28.349527 = Grams

EAGLE ROCK[®]
 TECHNOLOGIES



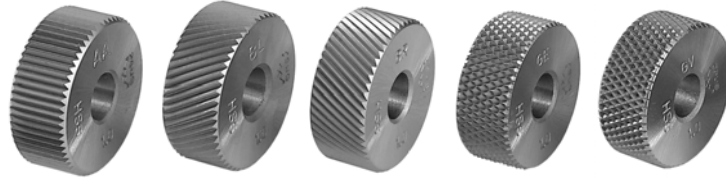
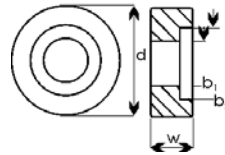
Knurls - Metric

L Series — 20 x 8 x 10/12

Counterbored



(d x w x b₁/b₂)



Tooth Angle	Pitch		AA 0°	BL 30°	BR 30°	GE 30°	GV 30°
	mm	[TPI]	Straight	Left Hand	Right Hand	Male	Female
90°	0.3	[85]	L10-A00-AA03	L10-A30-BL03	L10-A30-BR03	L10-A30-GE03	L20-A30-GV03
90°	0.4	[64]	L10-A00-AA04	L10-A30-BL04	L10-A30-BR04	L10-A30-GE04	L20-A30-GV04
90°	0.5	[51]	L10-A00-AA05	L10-A30-BL05	L10-A30-BR05	L10-A30-GE05	L20-A30-GV05
90°	0.6	[42]	L10-A00-AA06	L10-A30-BL06	L10-A30-BR06	L10-A30-GE06	L20-A30-GV06
90°	0.7	[36]	L10-A00-AA07	L10-A30-BL07	L10-A30-BR07	L10-A30-GE07	L20-A30-GV07
90°	0.8	[32]	L10-A00-AA08	L10-A30-BL08	L10-A30-BR08	L10-A30-GE08	L20-A30-GV08
90°	0.9	[28]	L10-A00-AA09	L10-A30-BL09	L10-A30-BR09	L10-A30-GE09	L20-A30-GV09
90°	1.0	[25]	L10-A00-AA10	L10-A30-BL10	L10-A30-BR10	L10-A30-GE10	L20-A30-GV10
90°	1.2	[21]	L10-A00-AA12	L10-A30-BL12	L10-A30-BR12	L10-A30-GE12	L20-A30-GV12
90°	1.5	[17]	L10-A00-AA15	L10-A30-BL15	L10-A30-BR15	L10-A30-GE15	L20-A30-GV15
90°	1.6	[16]	L10-A00-AA16	L10-A30-BL16	L10-A30-BR16	L10-A30-GE16	L20-A30-GV16
90°	1.8	[14]	L10-A00-AA18	L10-A30-BL18	L10-A30-BR18	L10-A30-GE18	L20-A30-GV18
90°	2.0	[13]	L10-A00-AA20	L10-A30-BL20	L10-A30-BR20	L10-A30-GE20	L20-A30-GV20

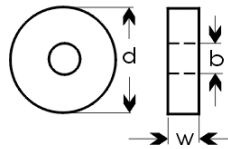
9

Knurlcraft[™]

Knurls - Metric

AC Series — 21.5 X 5 X 8

(d x w x b)



Tooth Angle	Pitch mm [TPI]	AA 0° Straight	BL 15° Left Hand	BL 30° Left Hand	BR 15° Right Hand	BR 30° Right Hand
90°	0.3 [85]	AC10-A00-AA03	AC10-A15-BL03	AC10-A30-BL03	AC10-A15-BR03	AC10-A30-BR03
90°	0.4 [64]	AC10-A00-AA04	AC10-A15-BL04	AC10-A30-BL04	AC10-A15-BR04	AC10-A30-BR04
90°	0.5 [51]	AC10-A00-AA05	AC10-A15-BL05	AC10-A30-BL05	AC10-A15-BR05	AC10-A30-BR05
90°	0.6 [42]	AC10-A00-AA06	AC10-A15-BL06	AC10-A30-BL06	AC10-A15-BR06	AC10-A30-BR06
90°	0.7 [36]	AC10-A00-AA07	AC10-A15-BL07	AC10-A30-BL07	AC10-A15-BR07	AC10-A30-BR07
90°	0.8 [32]	AC10-A00-AA08	AC10-A15-BL08	AC10-A30-BL08	AC10-A15-BR08	AC10-A30-BR08
90°	0.9 [28]	AC10-A00-AA09	AC10-A15-BL09	AC10-A30-BL09	AC10-A15-BR09	AC10-A30-BR09
90°	1.0 [25]	AC10-A00-AA10	AC10-A15-BL10	AC10-A30-BL10	AC10-A15-BR10	AC10-A30-BR10
90°	1.2 [21]	AC10-A00-AA12	AC10-A15-BL12	AC10-A30-BL12	AC10-A15-BR12	AC10-A30-BR12
90°	1.5 [17]	AC10-A00-AA15	AC10-A15-BL15	AC10-A30-BL15	AC10-A15-BR15	AC10-A30-BR15
90°	1.6 [16]	AC10-A00-AA16	AC10-A15-BL16	AC10-A30-BL16	AC10-A15-BR16	AC10-A30-BR16
90°	1.8 [14]	AC10-A00-AA18	AC10-A15-BL18	AC10-A30-BL18	AC10-A15-BR18	AC10-A30-BR18
90°	2.0 [13]	AC10-A00-AA20	AC10-A15-BL20	AC10-A30-BL20	AC10-A15-BR20	AC10-A30-BR20

2010

Metric Conversions

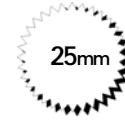
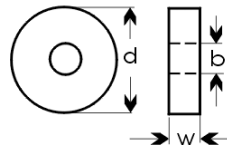
MM x 0.03937 = Inches
 Inches x 25.4 = MM
 Grams x 0.03527 = Ounces
 Ounces x 28.349527 = Grams



Knurls - Metric

V Series — 25 x 6 x 8

(d x w x b)



Tooth Angle	Pitch mm [TPI]	AA 0° Straight	BL 15° Left Hand	BL 30° Left Hand	BR 15° Right Hand	BR 30° Right Hand
90°	0.3 [85]	V10-A00-AA03	V10-A15-BL03	V10-A30-BL03	V10-A15-BR03	V10-A30-BR03
90°	0.4 [64]	V10-A00-AA04	V10-A15-BL04	V10-A30-BL04	V10-A15-BR04	V10-A30-BR04
90°	0.5 [51]	V10-A00-AA05	V10-A15-BL05	V10-A30-BL05	V10-A15-BR05	V10-A30-BR05
90°	0.6 [42]	V10-A00-AA06	V10-A15-BL06	V10-A30-BL06	V10-A15-BR06	V10-A30-BR06
90°	0.7 [36]	V10-A00-AA07	V10-A15-BL07	V10-A30-BL07	V10-A15-BR07	V10-A30-BR07
90°	0.8 [32]	V10-A00-AA08	V10-A15-BL08	V10-A30-BL08	V10-A15-BR08	V10-A30-BR08
90°	0.9 [28]	V10-A00-AA09	V10-A15-BL09	V10-A30-BL09	V10-A15-BR09	V10-A30-BR09
90°	1.0 [25]	V10-A00-AA10	V10-A15-BL10	V10-A30-BL10	V10-A15-BR10	V10-A30-BR10
90°	1.2 [21]	V10-A00-AA12	V10-A15-BL12	V10-A30-BL12	V10-A15-BR12	V10-A30-BR12
90°	1.5 [17]	V10-A00-AA15	V10-A15-BL15	V10-A30-BL15	V10-A15-BR15	V10-A30-BR15
90°	1.6 [16]	V10-A00-AA16	V10-A15-BL16	V10-A30-BL16	V10-A15-BR16	V10-A30-BR16
90°	1.8 [14]	V10-A00-AA18	V10-A15-BL18	V10-A30-BL18	V10-A15-BR18	V10-A30-BR18
90°	2.0 [13]	V10-A00-AA20	V10-A15-BL20	V10-A30-BL20	V10-A15-BR20	V10-A30-BR20