

Metric Conversions

MM	x	0.03937	=	Inches
Inches	x	25.4	=	MM
Grams	x	0.03527	=	Ounces
Ounces	x	28.349527	=	Grams

Knurlcraft[™]

Knurling Tools, Form Type – Double Knurl

No. K1-44

Heavy Duty Scissor Type Knurling Tools

Guaranteed to outlive and outperform any of the imported knockoffs.

The New Heavy Duty version of our original Scissor Type Knurling Tool. Featuring both **Standard** and **Counterbored** knurls to accommodate a wide variety of jobs. Knurling pressures are absorbed by the tool not your bed, compound, centers or feed screw.

The Knurls are quickly and easily replaced while still in your machine to minimize down time. Tool strength has been greatly increased to endure even your worst CNC application.

Our exclusive CNC shanks are a solid, one-piece construction that are offset to allow for virtually no turret overhang of the knurl.

Each tool includes one set of Medium pitch, Diamond pattern knurls.

Features

- **Machine:** Manual or CNC Lathe
- **Capacity:** Up to 4" [See Chart]
- **Knurl Sizes:** (E) 3/4x3/8x1/4
(L) 20x8x10/12
- **Knurl Patterns:** Straight [2 knurls AA]
Diamond, Male [1 knurl BL, 1 knurl BR]
- **Knurls Included:** 1 set [1 knurl BL and 1 knurl BR] Medium pitch, Diamond pattern

Toolcrib Classics[™]



2010

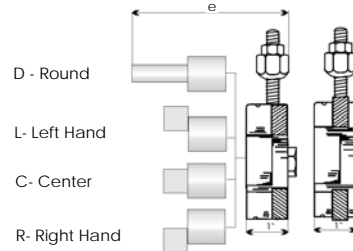
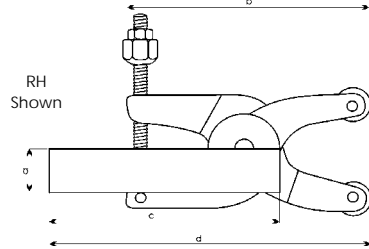
Metric Conversions

MM x 0.03937 = Inches
 Inches x 25.4 = MM
 Grams x 0.03527 = Ounces
 Ounces x 28.349527 = Grams



Knurling Tools, Form Type - Double Knurl

No. K1-44 (Continued)



Capacity	a	b	c	d	e	Knurl Size	Cat. No.
0-1"	5/8 LH	4 1/4	5.0	5 3/4	3.0	E - 3/4 x 3/8 x 1/4	K1-44-10-0625L-E
0-1"	5/8 RH	4 1/4	5.0	5 3/4	3.0	E - 3/4 x 3/8 x 1/4	K1-44-10-0625R-E
0-1"	3/4 LH	4 1/4	5.0	5 3/4	3.0	E - 3/4 x 3/8 x 1/4	K1-44-10-0750L-E
0-1"	3/4 RH	4 1/4	5.0	5 3/4	3.0	E - 3/4 x 3/8 x 1/4	K1-44-10-0750R-E

Capacity	a	b	c	d	e	Knurl Size	Cat. No.
0-2 1/8"	1/2 Center	5 1/2"	5.0	7.0	3.0	E - 3/4 x 3/8 x 1/4	K1-44-21-0500C-E
0-2 1/8"	1/2 LH	5 1/2"	5.0	7.0	3.0	E - 3/4 x 3/8 x 1/4	K1-44-21-0500L-E
0-2 1/8"	1/2 RH	5 1/2"	5.0	7.0	3.0	E - 3/4 x 3/8 x 1/4	K1-44-21-0500R-E
0-2 1/8"	5/8 Center	5 1/2"	5.0	7.0	3.0	E - 3/4 x 3/8 x 1/4	K1-44-21-0625C-E
0-2 1/8"	5/8 LH	5 1/2"	5.0	7.0	3.0	E - 3/4 x 3/8 x 1/4	K1-44-21-0625L-E
0-2 1/8"	5/8 RH	5 1/2"	5.0	7.0	3.0	E - 3/4 x 3/8 x 1/4	K1-44-21-0625R-E
0-2 1/8"	3/4 Round	5 1/2"	—	—	7.0	E - 3/4 x 3/8 x 1/4	K1-44-21-0750D-E
0-2 1/8"	3/4 LH	5 1/2"	5.0	7.0	3.0	E - 3/4 x 3/8 x 1/4	K1-44-21-0750L-E
0-2 1/8"	3/4 RH	5 1/2"	5.0	7.0	3.0	E - 3/4 x 3/8 x 1/4	K1-44-21-0750R-E
0-2 1/8"	1" Round	5 1/2"	—	—	7.0	E - 3/4 x 3/8 x 1/4	K1-44-21-1000D-E
0-2 1/8"	1" LH	5 1/2"	5.0	7.0	3.0	E - 3/4 x 3/8 x 1/4	K1-44-21-1000L-E
0-2 1/8"	1" RH	5 1/2"	5.0	7.0	3.0	E - 3/4 x 3/8 x 1/4	K1-44-21-1000R-E

Capacity	a	b	c	d	e	Knurl Size	Cat. No.
0-2 1/8"	1/2 LH	5 1/2"	5.0	7.0	3.0	L - 20 x 8 x 10/12	K1-44-21-0500L-L
0-2 1/8"	1/2 RH	5 1/2"	5.0	7.0	3.0	L - 20 x 8 x 10/12	K1-44-21-0500R-L
0-2 1/8"	5/8 LH	5 1/2"	5.0	7.0	3.0	L - 20 x 8 x 10/12	K1-44-21-0625L-L
0-2 1/8"	5/8 RH	5 1/2"	5.0	7.0	3.0	L - 20 x 8 x 10/12	K1-44-21-0625R-L
0-2 1/8"	3/4 Round	5 1/2"	—	—	7.0	L - 20 x 8 x 10/12	K1-44-21-0750D-L
0-2 1/8"	3/4 LH	5 1/2"	5.0	7.0	3.0	L - 20 x 8 x 10/12	K1-44-21-0750L-L
0-2 1/8"	3/4 RH	5 1/2"	5.0	7.0	3.0	L - 20 x 8 x 10/12	K1-44-21-0750R-L
0-2 1/8"	1" Round	5 1/2"	—	—	7.0	L - 20 x 8 x 10/12	K1-44-21-1000D-L
0-2 1/8"	1" LH	5 1/2"	5.0	7.0	3.0	L - 20 x 8 x 10/12	K1-44-21-1000L-L
0-2 1/8"	1" RH	5 1/2"	5.0	7.0	3.0	L - 20 x 8 x 10/12	K1-44-21-1000R-L

Capacity	a	b	c	d	e	Knurl Size	Cat. No.
2 1/8-4"	3/4 Center	8 1/4	5.0	8.0	3.0	E - 3/4 x 3/8 x 1/4	K1-44-40-0750C-E
2 1/8-4"	3/4 Round	8 1/4	—	—	7.0	E - 3/4 x 3/8 x 1/4	K1-44-40-0750D-E
2 1/8-4"	3/4 LH	8 1/4	5.0	8.0	3.0	E - 3/4 x 3/8 x 1/4	K1-44-40-0750L-E
2 1/8-4"	3/4 RH	8 1/4	5.0	8.0	3.0	E - 3/4 x 3/8 x 1/4	K1-44-40-0750R-E
2 1/8-4"	1" Center	8 1/4	5.0	8.0	3.0	E - 3/4 x 3/8 x 1/4	K1-44-40-1000C-E
2 1/8-4"	1" Round	8 1/4	—	—	7.0	E - 3/4 x 3/8 x 1/4	K1-44-40-1000D-E
2 1/8-4"	1" LH	8 1/4	5.0	8.0	3.0	E - 3/4 x 3/8 x 1/4	K1-44-40-1000L-E
2 1/8-4"	1" RH	8 1/4	5.0	8.0	3.0	E - 3/4 x 3/8 x 1/4	K1-44-40-1000R-E

* for other shank and knurl configurations, please call