

Metric Conversions

MM	x	0.03937	=	Inches
Inches	x	25.4	=	MM
Grams	x	0.03527	=	Ounces
Ounces	x	28.349527	=	Grams



Knurling Tools, Form Type – Double Knurl

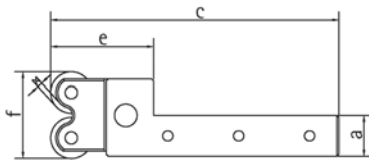
No. K1-651

CNC Bump Type Knurling Tools

With Reversible CNC Shanks. Head is self-centering to accommodate for any misalignment. Integrated set screws for easy adjustment of the clearance angle. Special surface hardening for increased wear resistance. Reversible shank accommodates Left or Right hand applications. Holders include carbide pins and one set of Medium pitch, Diamond pattern [BL and BR] knurls.

Features

- **Machine:** CNC Lathe
- **Knurl Size:** see below
- **Knurl Patterns:** Straight [2 knurls AA] Diamond, Male [1 knurl BL, 1 knurl BR]
- **Knurls Included:** 1 set [1 knurl BL and 1 knurl BR] Medium pitch, Diamond pattern



12

Capacity	Shank Size	b	c	d	e	f	x	Knurl Size	Cat. No.
10-80mm	20	20	130	20	50	42	2.5	S-20x8x6	K1-651-M20U-S
50-200	25	20	156	20	56	55	2.5	W-25x8x6	K1-651-M25U-W
6-15	5/8"	16	119	16	29	34	2	C-5/8x1/4x1/4	K1-651-0625U-C
10-80	3/4"	20	130	20	50	41	2	E-3/4x3/8x1/4	K1-651-0750U-E
10-80	1"	20	140	20	50	41	3	E-3/4x3/8x1/4	K1-651-1000U-E

2010

Metric Conversions

MM x 0.03937 = Inches
 Inches x 25.4 = MM
 Grams x 0.03527 = Ounces
 Ounces x 28.349527 = Grams

EAGLE ROCK[®]
 TECHNOLOGIES



Knurling Tools, Form Type - Double Knurl

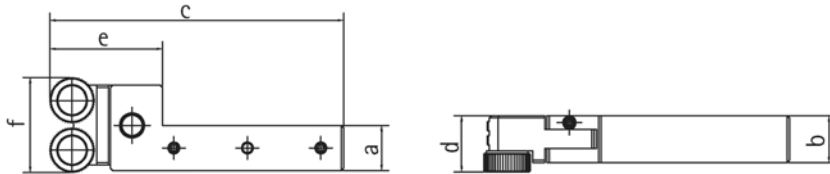
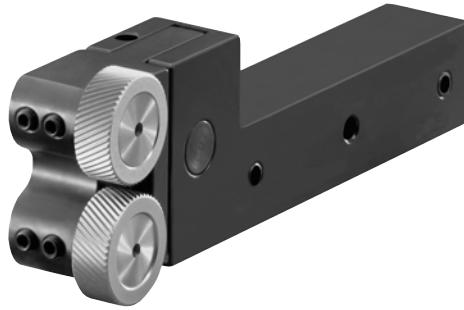
No. K1-651

CNC "Up-To-The-Shoulder" Bump Type Knurling Tools

With Reversible CNC Shanks. Uses Counterbored knurls to knurl up to a shoulder. Head is self-centering to accommodate for any misalignment. Integrated set screws for easy adjustment of the clearance angle. Special surface hardening for increased wear resistance. Reversible shank accommodates Left or Right hand applications. Holders include carbide pins and one set of Medium pitch, Diamond pattern [BL and BR] knurls.

Features

- **Machine:** CNC Lathe
- **Knurl Size:** (BX) 15x6x6/11
(BY) 20x8x6/13
- **Knurl Patterns:** Straight [2 knurls AA]
Diamond, Male [1 knurl BL, 1 knurl BR]
- **Knurls Included:** 1 set [1 knurl BL and 1 knurl BR] Medium pitch, Diamond pattern



12

Capacity	Shank Size	b	c	d	e	f	Knurl Size	Cat. No.
8-15 mm	16	16	119	19	39	33	BX-15x6x6/11	K1-651-M20U-S
10-80	20	20	130	24	50	42	BY-20x8x6/13	K1-651-M20U-S
10-80	25	20	130	24	50	42	BY-20x8x6/13	K1-651-M25U-W
8-15	5/8"	16	119	19	39	33	BX-15x6x6/11	K1-651-0625U-C
10-80	3/4"	20	130	24	50	42	BY-20x8x6/13	K1-651-0750U-E
10-80	1"	20	130	24	50	42	BY-20x8x6/13	K1-651-1000U-E