

2010

Metric Conversions

MM x 0.03937 = Inches  
 Inches x 25.4 = MM  
 Grams x 0.03527 = Ounces  
 Ounces x 28.349527 = Grams

**EAGLE ROCK**<sup>®</sup>  
 TECHNOLOGIES

**Wettstein Tool**<sup>™</sup>

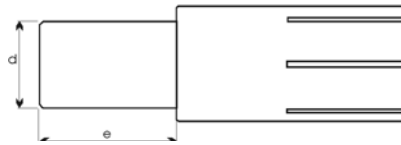
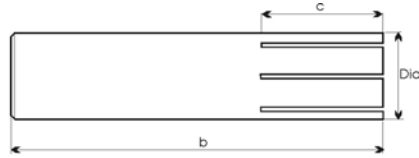
Turning Accessories

No. A1-52

Machinable Expanding Arbors

An effective and economical means for internal chucking. Easy Machinability and operation. Available individually or in complete sets with wrenches.

**Toolbox Basics**<sup>™</sup>



4

Diameter	Minimum Machinable Dia.	b	c	d	e	Cat. No.
1/4"	.135"	3"	1/4"	—	—	A1-52-0250
3/8"	.200	3	1/2"	—	—	A1-52-0375
1/2"	.200	3	1/2"	—	—	A1-52-0500
5/8"	.250	3	7/8"	—	—	A1-52-0625
3/4"	.250	4	7/8"	—	—	A1-52-0750
7/8"	.360	4	1 1/4"	—	—	A1-52-0875
1"	.360	4	1 1/4"	—	—	A1-52-1000
1 1/4"	.360	4	1 1/4"	1"	1 1/2"	A1-52-1250
1 1/2"	.360	4	1 1/4"	1"	1 1/2"	A1-52-1500
1 3/4"	.360	4	1 1/4"	1"	1 1/2"	A1-52-1750
2"	.360	4	1 1/4"	1"	1 1/2"	A1-52-2000
2 1/2"	.360	4	1 1/4"	1"	1 1/2"	A1-52-2500
3"	.360	4	1 1/4"	1"	1 1/2"	A1-52-3000

	Cat. No.
Expanding Arbor Set 1/8 - 1 1/4" (8 pcs) with wooden stand	A1-52-0001
Expanding Arbor Set 1 1/2, 1 3/4, 2" (3 pcs)	A1-52-0002